



**tec system**



**BAYA**



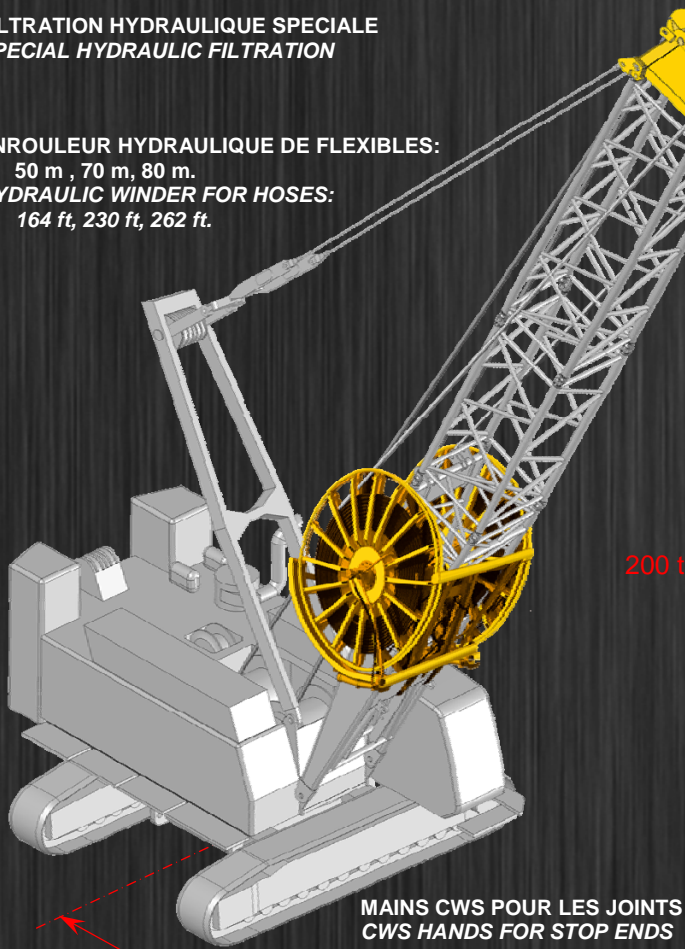
**POUR ECRAN ETANCHE,  
PAROI MOULEE, PAROI  
ARMEE COULIS, BARRETTE...**

**FOR CUT OFF, DIAPHRAGM  
WALL, SLURRY BEAM WALL,  
BARRETTE ...**

DEMI TOUR AUTOMATIQUE OU MANUEL  
AUTOMATIC OR MANUAL HALF TURN

FILTRATION HYDRAULIQUE SPECIALE  
SPECIAL HYDRAULIC FILTRATION

ENROULEUR HYDRAULIQUE DE FLEXIBLES:  
50 m , 70 m, 80 m.  
HYDRAULIC WINDER FOR HOSES:  
164 ft, 230 ft, 262 ft.



MAINS CWS POUR LES JOINTS  
CWS HANDS FOR STOP ENDS

4.50 à 9.50 m\*  
15 to 31 ft\*

\* : selon porteur / carrier depending

CARDAN  
CARDAN

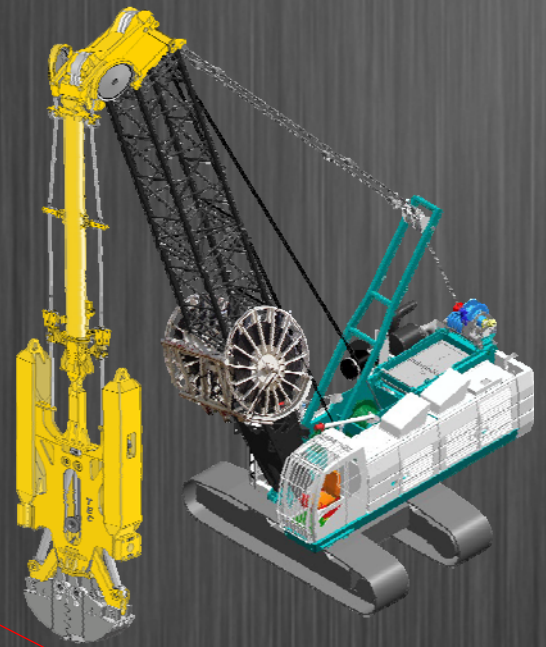
CARDAN  
CARDAN

**patented**

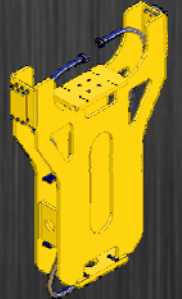
200 t

2 VERINS 96 t CHACUN  
2 CYLINDERS 96 t EACH

13 à 16 m / 42 to 52 ft



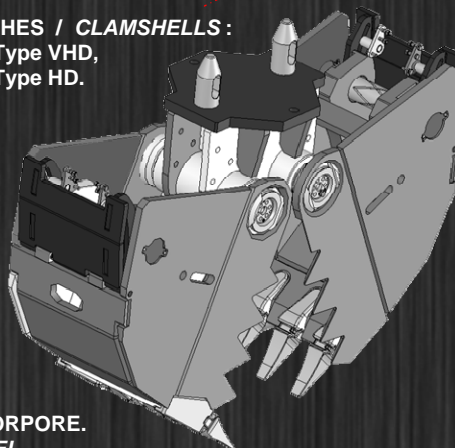
EXTENSION SUPERIEURE BAYA 20  
TOP EXTENSION FOR BAYA 20  
2.9 t



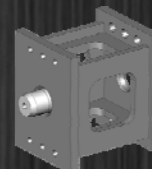
POSSIBILITE DE JOINT TOURNANT  
EMBARQUE  
INBOARD TURNING JOINT

GUIDES ORIENTABLES  
SWIVELING GUIDES

POCHES / CLAMSHELLS:  
Type VHD,  
Type HD.



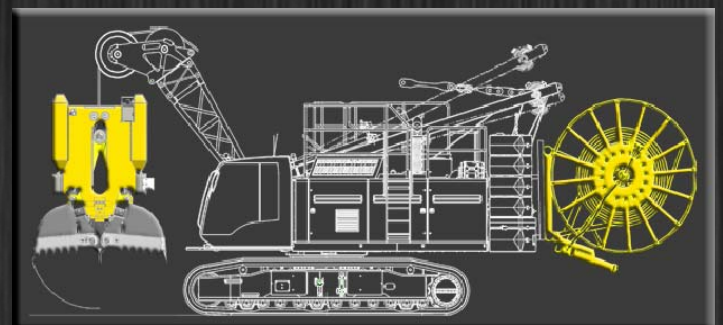
ELARGISSEURS DE GUIDE :  
2800 / 3200 / 3600 / 4200 mm  
GUIDE WIDENERS:  
110 / 126 / 142 / 165 in;



**patented**



TREPAN INCORPORE.  
INSIDE CHISEL.





<b>Porteurs</b>		<b>Carriers</b>	
Casagrande : C600 – C850 – C900			
Liebherr : HS845 – HS852 – HS853 – HS855 – HS872 – HS873 – HS875			
<b>Capacités</b>		<b>Capacities</b>	
Profondeurs	50 – 70 – 80 m	Depth	164 – 230 – 262 ft
Epaisseurs	500 à 1800 mm	Thickness	19.7 to 70.9 in
Longueur benne	2700/2800/3200/3600/4200	Grab length	106/110/126/142/165 in
<b>Caractéristiques</b>		<b>Technical data</b>	
Capacité des vérins	2 x 96 t à 350 b	Cylinder capacity	2 x 219 000 lbs at 350 b
Force de fermeture aux dents	2 x 55 t	Closing force at teeth	2 x 125 000 lbs
Couple de fermeture	2 x 64 tm	Closing torque	2 x 477 100 lbsft
Positionnement d'angle initial	Oui	Initial angle adjustment	Yes
Demi tour automatique	Oui	Automatic half turn	Yes
<b>Autres équipements</b>		<b>Other equipments</b>	
Filtration spéciale pour protection porteur,		Special filtration to protect the carrier,	
Elargisseurs de guides de 2700 à 2800 / 3200 / 3600 / 4200,		Guide wideners from 106 to 110/126/142/165 in	
Moniteur embarqué TARABEN pour contrôle des verticalités,		Inboard Taraben monitor for verticality control,	
Kit de transport rapide,		Quick transport kit,	
Cardans haut et bas,		Cardans at top and bottom,	
Trépan incorporé aux poches.		Chisel inside the clamshells.	
<b>Poche / Clamshell</b>	<b>Poids – volume – poids total mobile</b>	<b>Weight - volume – total mobile weight</b>	
2700 x 500 VHD	3,15 t – 750 L – 12,5 t	7 200 Lbs – 190 gal (US) – 28 500 Lbs	
2700 x 600 VHD	3,25 t – 950 L – 13 t	7 400 Lbs – 240 gal (US) – 29 600 Lbs	
2700 x 800 VHD	4,15 t – 1340 L – 14 t	9 400 Lbs – 340 gal (US) – 31 900 Lbs	
2700 x 1000 VHD	5,15 t – 1830 L – 15 t	11 700 Lbs – 470 gal (US) – 34 200 Lbs	
2700 x 1200 VHD	6,15 t – 2120 L – 16 t	13 700 Lbs – 550 gal (US) – 36 400 Lbs	
2700 x 1500 VHD	7,70 t – 3010 L – 17,3 t	17 500 Lbs – 780 gal (US) – 39 400 Lbs	
2700 x 1600 VHD	7,85 t – 2140 L – 18 t	17 900 Lbs – 564 gal (US) – 41 000 Lbs	
2700 x 1800 VHD	8,85 t – 2410 L – 19 t	20 100 Lbs – 636 gal (US) – 43 300 Lbs	
2800 x 500 VHD	3,25 t – 800 L – 12,5 t	7 400 Lbs – 210 gal (US) – 28 500 Lbs	
2800 x 600 VHD	3,35 t – 1000 L – 13 t	7 600 Lbs – 260 gal (US) – 29 600 Lbs	
2800 x 800 VHD	4,25 t – 1400 L – 14 t	9 600 Lbs – 370 gal (US) – 31 900 Lbs	
2800 x 1000 VHD	5,25 t – 1900 L – 15 t	11 900 Lbs – 480 gal (US) – 34 200 Lbs	
2800 x 1200 VHD	6,25 t – 2200 L – 16 t	14 200 Lbs – 590 gal (US) – 36 400 Lbs	
2800 x 1500 VHD	7,80 t – 2900 L – 17,3 t	17 700 Lbs – 750 gal (US) – 39 400 Lbs	
2800 x 1600 VHD	7,95 t – 3100 L – 18 t	18 100 Lbs – 800 gal (US) – 41 000 Lbs	
3200 x 762 VHD	4,40 t – 1700 L – 15 t	10 000 Lbs – 450 gal (US) – 34 200 Lbs	
3200 x 914 VHD	4,95 t – 2000 L – 15,5 t	11 200 Lbs – 520 gal (US) – 35 300 Lbs	
3200 x 1066 VHD	5,50 t – 2300 L – 16 t	12 500 Lbs – 590 gal (US) – 36 400 Lbs	
3600 x 600 VHD	3,80 t – 1600 L – 15 t	8 600 Lbs – 415 gal (US) – 34 200 Lbs	
3600 x 800 VHD	4,80 t – 2200 L – 16 t	10 900 Lbs – 570 gal (US) – 36 400 Lbs	
3600 x 1000 VHD	5,80 t – 2800 L – 17 t	13 200 Lbs – 730 gal (US) – 38 700 Lbs	
3600 x 1200 VHD	6,80 t – 3400 L – 18 t	15 500 Lbs – 880 gal (US) – 41 000 Lbs	
3600 x 1500 VHD	8,30 t – 4300 L – 19,5 t	18 900 Lbs – 1120 gal (US) – 44 400 Lbs	
4200 x 800 VHD	5,40 t – 2800 L – 16,5 t	12 300 Lbs – 730 gal (US) – 37 600 Lbs	
4200 x 1000 VHD	6,40 t – 3500 L – 17,5 t	14 600 Lbs – 910 gal (US) – 39 900 Lbs	
4200 x 1200 VHD	7,40 t – 4200 L – 18,5 t	16 800 Lbs – 1090 gal (US) – 42 200 Lbs	



Poids total sur porte char type 3, 65 t avec grue HS 855, 72 t avec grue C850.

Poids de la benne, contrepoids, flèches, poches sur semi-remorques :

Total weight on flat bed truck, 3 type, 65 t with HS 855 carrier, 72 t with C850.

Weight of grab, counterweights, boom, clamshells on trailers : 40 / 50 t



